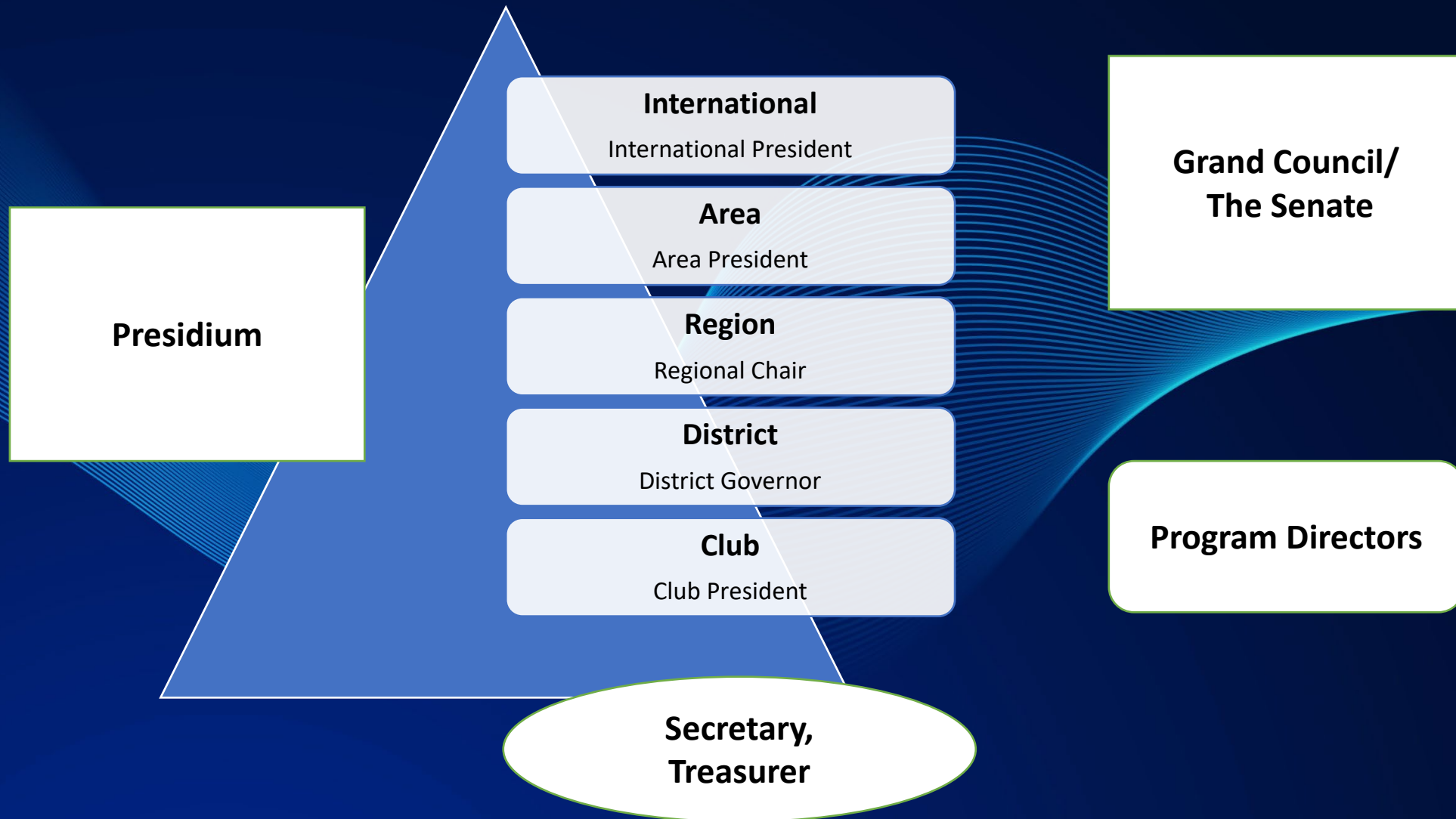




Organisational Hierarchy

A New Beginning... for a Better World !

Our Organizational Hierarchy



Presidium

Constitution,
Vision,
Direction
Policies & Processes

Grand Council/The Senate

Guidance,
Election,
Conflict Resolution

IP/ AP/
RC/
DG/CP

Program Directors

Program Management Team
Program strategy,
Planning & Coordination

Cabinet

Leadership
Coordination
Execution

Positions at Each Level

Level	Cabinet	Grand Council/ Senate	Presidium	Program Directors
International	<ul style="list-style-type: none"> • IP, ISG, IT • IP is elected • ISG, IT are nominated and approved by the Presidium 	<ul style="list-style-type: none"> • Minimum 3 and maximum 9 members • Should not hold any other position in YMI • Nominated by the Presidium • Can continue beyond 2 years 	<ul style="list-style-type: none"> • Immediate Past IP, IP, IP Elect • ISG, IT • 18 Elected members including 1 youth and 1 women members • Maximum Period of 2 years for elected members 	<ul style="list-style-type: none"> • Nominated by the Cabinet with inputs from Areas concerned • Currently 15, international cabinet can decide the number and portfolios
Area	<ul style="list-style-type: none"> • AP, AS, AT • Same as above 	Same as above	<ul style="list-style-type: none"> • Immediate Past AP, AP, AP Elect • AS, AT • RCs and RCEs of the Area concerned • Total of 23 members or less, including the above and balance members elected including 1 youth and 1 women members • Maximum Period of 2 years for elected members 	<ul style="list-style-type: none"> • Nominated by the Cabinet with inputs from Regions • Currently 15, Regional cabinet can decide the number and portfolios • All relevant portfolios at International level to be maintained

Positions at Each Level

Level	Cabinet	Senate	Presidium	Program Directors
Region	<ul style="list-style-type: none"> • RC, RS, RT • Same as above 	<ul style="list-style-type: none"> • Minimum 3 and maximum 9 members • Should not hold any other position in YMI • Nominated by the Presidium • Can continue beyond 2 years 	<ul style="list-style-type: none"> • Immediate Past RC, RC, RC Elect • RS, RT • DGs and DGEs of the Region concerned • Total of 23 members or less, including the above and balance members elected including 1 youth and 1 women members • Maximum Period of 2 years for elected members 	<ul style="list-style-type: none"> • Nominated by the Cabinet with inputs from Districts • Currently 15, Regional cabinet can decide the number and portfolios • All relevant portfolios at International and Area level to be maintained
District	<ul style="list-style-type: none"> • DG, DS, DT • Same as above 	Same as above	<ul style="list-style-type: none"> • Immediate Past DG, DG, DG Elect • DS, DT • DGs and DGEs of the Area concerned • Total of 23 members or less, including the above and balance members elected including 1 youth and 1 women members • Maximum Period of 2 years for elected members 	<ul style="list-style-type: none"> • Nominated by the Cabinet with inputs from Clubs • Currently 15, Regional cabinet can decide the number and portfolios • All relevant portfolios at District level to be maintained